

Block bottom bag

Printed pouches | flexible packaging manufacturer



I. About block bottom bags

Block bottom bags are 8-side sealed. Therefore it has 5 panels for effective printing: front, back, bottom, left and right sides.

Besides, the bottom of the bag is different from a traditional stand-up bag. To be more specific, It is totally flat and without any folding. Therefore the texts as well as graphics will be better displayed. In other words, we then have plenty of space to further describe and show our products.

In addition, for the reason that it can sit well, extra outside packaging materials optionally can be omitted. So cost also comes down.

What's more for different applications, we have different films structure to cater. Not to mention that full range of materials and design elements like tab, zipper, valve are available for your projects. Apart from this, a longer shelf life can be achieved.

Above all, block bottom bags are widely used in below industries:

- Coffee
- Tea
- Pet food and treats
- Facial masks
- Whey protein powder
- Snack & cookies
- Cereal

1.1 MAIN MATERIALS

- MOPP
- OPP
- PET
- VMPET
- LDPE
- ALUMINUM
- NYLON



1.2 DESIGN ACCESSORIES

- Round corners
- Zip lock
- Hang hole
- Tear notches
- Window
- Childproof locking
- Spout
- Valve

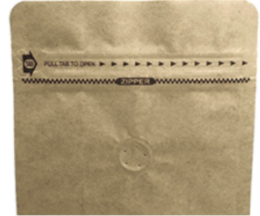
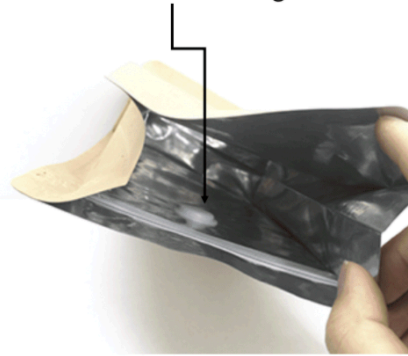
Multi Opening Options

Side zipper | Tin tie | Heat seal

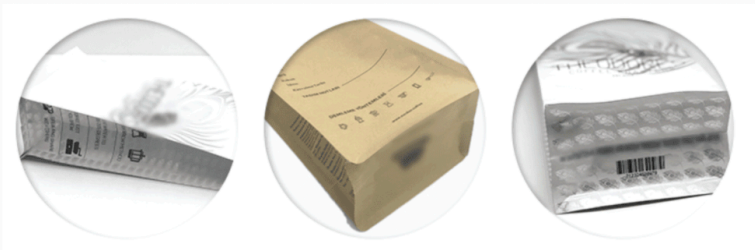


Valves

For coffee bag

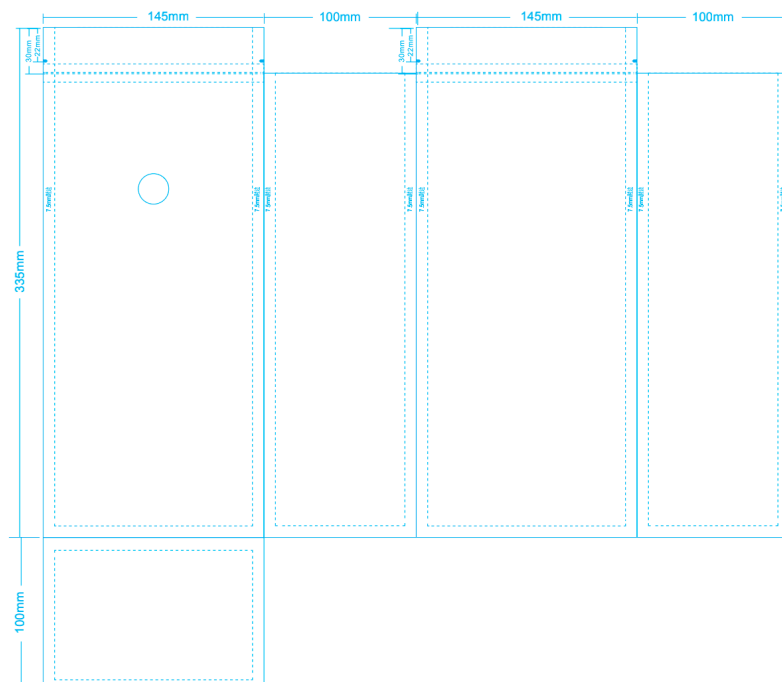


More printed sides to display



1.3 SIZE REFERENCE

Width x Height x Bottom	Weight by Rice
9.5 x 18.5 x 6 cm	100 g
12.5 x 19.5 x 7.9 cm	250 g
13.2 x 15 x 8 cm	500 g
10 x 20 x 6 cm	500 g
12 x 22 x 6 cm	700 g
14 x 24 x 6 cm	1000 g
15 x 33.5 x 10 cm	1000 g
16 x 26 x 8 cm	1750 g
18 x 28 x 8 cm	2000 g
27 x 41.5 x 11 cm	2500 g
20 x 30 x 8 cm	2750 g



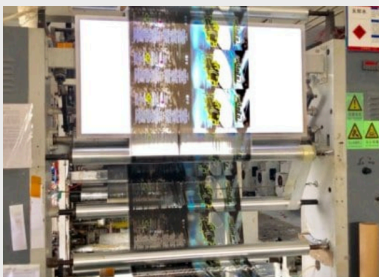
2.1 Digital printing



Digital printing allows MOQ to be 200 to 500 bags as a start. Very widely applied while trial orders or startups needed.

No color limits, no plates needed, swift delivery time in 10 days.

2.2 Gravure printing



Gravure plate printing normally requires a MOQ of 5000 to 10000 bags. Especially preferred when clients want to settle down a long term design and save long term packaging cost significantly.

One plate for one color per design.

Including making plates, normal lead time is 15-25 days.

2. Printed Pouches manufacturer

As a flexible packaging manufacturer, our scope includes printed block bottom bags.

And our facility is equipped with:

- 2 gravure printing lines and 1 digital printing line
- 2 laminating lines
- 2 block bottom bag pouches bagging lines

For the reason that we have both plate printing and digital printing, it is possible for us offer custom or print pouches for both big and small clients.

Normally qualified food grade films are taken as raw materials. Unless special requests made. Even more, from raw material quality assurance to integrity testing, we are committed to offering you the best flat bottom pouches at best price.

You are welcome to contact us via info@gozeniths.com right now, we will get back to you in 12 hours.

2.3 Films laminating



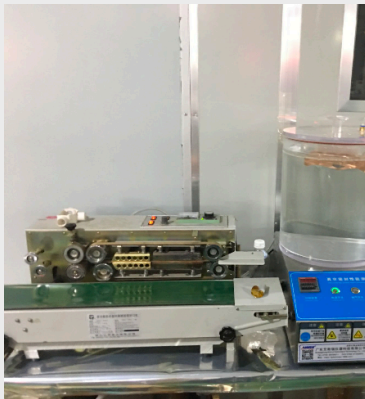
Printed films laminated with barrier lining and heat sealing films to form multi functional rolls of films.

2.4 Roll bagging



Resealable zip lock added and bagged into finished printed pouches

2.5 Integrity testing



2.6 Packing and delivery



Contact us

gozeniths.com

info@gozeniths.com

+86 27 8581 7670

+86 18571566509

NO.25, XINBU ROAD, TONG
LE, SHENZHEN CITY, CHINA

ZIP CODE #518000



... Also wanted to say thank you again for the bags! They are amazing!!



... Great job guys! Really thank you for your input!



... Great job guys! Really thank you for your input!

3. Find out more Gozeniths.com



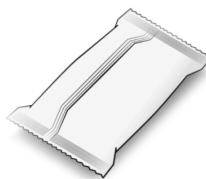
printed stand up pouch



three side sealed bag



block bottom bag



pillow printed pouches



side gusset bag



more options